

Jaffrey Meetinghouse Tower Project

Final Report

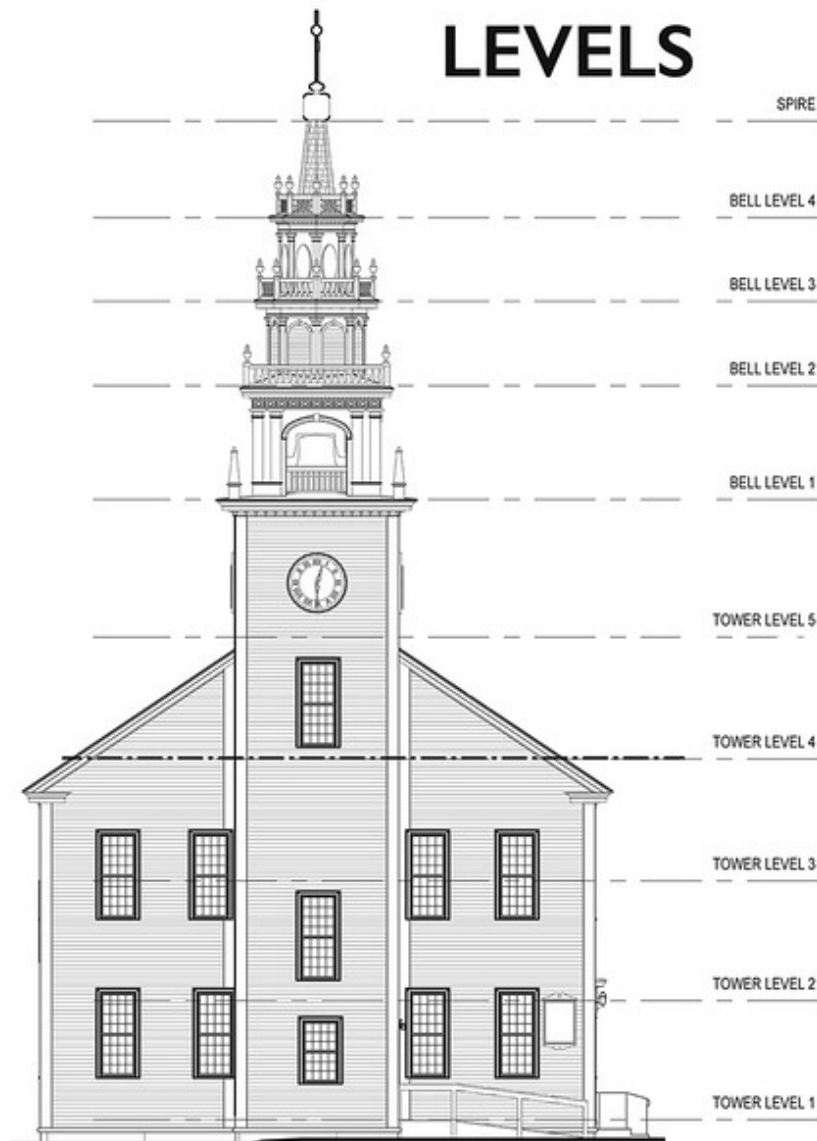
September 26, 2022

D. Photographs.

Number the pictures, and insert corresponding numbered arrows on the site and floor plans, indicating the direction of each view. High-resolution digital photos embedded into a Word document are fine (no more than two images per page, please). Insert a caption with each image, describing where the photo was taken.

Photos should include:

- A. Whole structure showing major faces or elevations
- B. Setting around the structure
- C. Significant exterior features
- D. Significant interior features
- E. Improved areas



Looking East

CONTENTS:

- 1 Levels
- 4 A. Whole structure showing major faces or elevations
- 4 1. View of the Tower looking north prior to any work being done. May 3, 2020.
- 4 2. View of the Tower looking east prior to any work being done. May 3, 2020.
- 5 B. Setting around the structure
- 5 3. Diagrammatic plan of the Meetinghouse surroundings.
- 5 4. Aerial view showing Route 124 (at bottom), Little Red Schoolhouse, Old Burying Ground, Horsesheds, and Meetinghouse.
- 6 5. Aerial view looking northeast, with the Meetinghouse, Horsesheds, Old Burying Ground, Little Red Schoolhouse, Cutter Tavern, First Church, Thorndike Store, The Common, Cutter Park and Melville Academy comprising the ensemble—the original heart of Jaffrey. (1980)
- 6 6. Looking north across the Common. Little Red Schoolhouse on the left, Horsesheds with Old Burying Ground beyond, Meetinghouse, former Cutter Tavern on the right. September 16, 2022.
- 7 C. Significant exterior features
- 7 7. View looking northeast showing deteriorated balustrade on the roof of the Bell Level 1. July 15, 2020.
- 7 8. Southwest corner of Bell Level 2 showing deteriorated balustrade and roof. August 7, 2020.
- 8 9. Deteriorated urns on Bell Level 3. May 27, 2022.
- 8 10. Preparing for painting, west façade and tower looking southeast. May 13, 2022.
- 9 11. Painting, south side of Tower, looking north. May 31, 2022.
- 9 12. New urns to be installed at Bell Level 3. June 14, 2022.
- 10 UPPER LEVELS: Before
- 10 13. Bell Levels. Note tipping urn on upper right. May 26, 2022.
- 10 14. Spire & base of Weathervane. Looking south. May 27, 2022.
- 11 UPPER LEVELS: After
- 11 15. Bell Level 1. Looking north. Bell apparatus. June 2, 2022.
- 11 16. Bell Level. Looking north. Green panels. June 2, 2022.
- 12 17. Spire and Weathervane. Looking north. June 2, 2022.
- 13 CLOCK FACES:
- 13 18. Clock Face, probably south, before restoration & regilding. June 2, 2022.
- 13 19. Clock face on west side. Phil D’Avanza removing numerals & digits. June 2, 2022.
- 14 20. Jim Hammond & Phil D’Avanza with new clock hands. August 8, 2022.
- 14 21. Phil D’Avanza installing new hands. August 8, 2022.
- 15 D. Significant interior features
- 15 BEFORE: Tower Level 2 (“Yellow Room”)
- 15 1. Looking East. June 12, 2020.
- 15 2. Looking Northeast. June 12, 2020.
- 16 3. Looking northwest. Former toilet cubicle at rear. June 12, 2020.
- 16 4. Looking west. Door to upper Tower on left. June 12, 2020.
- 17 WORK IN PROGRESS: Tower Level 2 (“Yellow Room”)
- 17 5. Looking East. June 14, 2022.
- 17 6. Looking Northeast. June 7, 2022.
- 18 7. Looking northwest. Former toilet cubicle at rear. June 8, 2022.
- 18 8. Looking west. Door to upper Tower on left. June 8, 2022.

- 19 BEFORE: Tower Level 3
- 19 1. Looking down stairs from Tower Level 3. June 2, 2016.
- 19 2. Tower Level 3, looking southwest, showing stairs down to Level 2. June 12, 2020.
- 20 3. Stairs from Tower Level 3 up to Level 4. June 12, 2020.
- 21 BEFORE: Tower Level 4
- 21 1. Tower Level 4 looking northeast with stairs up to Level 5. June 12, 2020.
- 21 2. Tower Level 4 flooring looking northeast. June 12, 2020.
- 22 BEFORE: Tower Level 5
- 22 1. Tower Level 5 with stairs to Bell Level 1. June 2, 2016.
- 23 E. Improved areas
- 23 COMPLETION: Tower Level 2 (“Yellow Room”)
- 23 1. Looking East. July 4, 2022.
- 23 2. Looking Northeast. September 24, 2022.
- 24 3. Looking northwest. Former toilet cubicle at rear. July 4, 2022.
- 24 4. Looking west. Door to upper Tower on left. July 4, 2022.
- 25 COMPLETION: Tower Level 3
- 25 1. Looking south. Stairs up to Level 3. September 24, 2022.
- 25 2. Looking east. Stairs up to Level 3. September 24, 2022.
- 26 3. Looking southwest. Stairs down to Level 2. September 24, 2022.
- 26 4. Looking north. Stairs up to Level 4. September 24, 2022.
- 27 COMPLETION: Tower Level 4
- 27 1. Looking southwest. May 28, 2022.
- 27 2. Looking west. Stairs down to Level 3. September 24, 2022.
- 28 3. Looking west. Stairs up to Level 4. September 24, 2022.
- 29 COMPLETION: Tower Level 5
- 29 1. Looking south. Stairs to Bell Level 1. Clock enclosure on right. September 24, 2022.
- 29 2. Looking south. Stairs to Bell Level 1. September 24, 2022.
- 30 3. Looking south. Clock enclosure on left. September 24, 2022.

A. Whole structure showing major faces or elevations



1. View of the Tower looking north prior to any work being done. May 3, 2020.



2. View of the Tower looking east prior to any work being done. May 3, 2020.

B. Setting around the structure



3. Diagrammatic plan of the Meetinghouse surroundings.



4. Aerial view showing Route 124 (at bottom), Little Red Schoolhouse, Old Burying Ground, Horsesheds, and Meetinghouse.



5. Aerial view looking northeast, with the Meetinghouse, Horsesheds, Old Burying Ground, Little Red Schoolhouse, Cutter Tavern, First Church, Thorndike Store, The Common, Cutter Park and Melville Academy comprising the ensemble—the original heart of Jaffrey. (1980)



6. Looking north across the Common. Little Red Schoolhouse on the left, Horsesheds with Old Burying Ground beyond, Meetinghouse, former Cutter Tavern on the right. September 16, 2022.

C. Significant exterior features



7. View looking northeast showing deteriorated balustrade on the roof of the Bell Level 1. July 15, 2020.



8. Southwest corner of Bell Level 2 showing deteriorated balustrade and roof. August 7, 2020.



9. Deteriorated urns on Bell Level 3. May 27, 2022.



10. Preparing for painting, west façade and tower looking southeast. May 13, 2022.



11. Painting, south side of Tower, looking north. May 31, 2022.



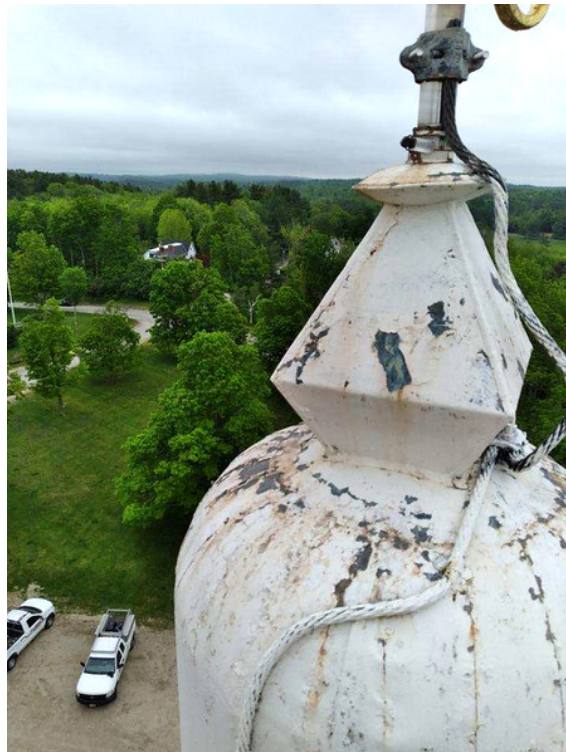
12. New urns to be installed at Bell Level 3. June 14, 2022.

Photographic documentation of the exterior of the upper Tower (Bell Levels 1-4 and the Spire) was undertaken by the Contractor via a lift. The Project Manager was able to access Bell Level 1 & 2 but not fully. He was not able to access any areas from Bell Level 1 upward following project completion because of physical limitations.

BEFORE:



13. Bell Levels. Note tipping urn on upper right. May 26, 2022.



14. Spire & base of Weathervane. Looking south. May 27, 2022.

AFTER:



15. Bell Level 1. Looking north. Bell apparatus. June 2, 2022.



16. Bell Level. Looking north. Green panels. June 2, 2022.



17. Spire and Weathervane. Looking north. June 2, 2022.

CLOCK FACES:



18. Clock Face, probably south, before restoration & regilding. June 2, 2022.



19. Clock face on west side. Phil D'Avanza removing numerals & digits. June 2, 2022.



20. Jim Hammond & Phil D'Avanza with new clock hands. August 8, 2022.



21. Phil D'Avanza installing new hands. August 8, 2022.

D. Significant interior features

BEFORE: Tower Level 2 (“Yellow Room”)



1. Looking East. June 12, 2020.



2. Looking Northeast. June 12, 2020.



3. Looking northwest. Former toilet cubicle at rear. June 12, 2020.



4. Looking west. Door to upper Tower on left. June 12, 2020.

WORK IN PROGRESS: Tower Level 2 (“Yellow Room”)



5. Looking East. June 14, 2022.



6. Looking Northeast. June 7, 2022.



7. Looking northwest. Former toilet cubicle at rear. June 8, 2022.



8. Looking west. Door to upper Tower on left. June 8, 2022.

BEFORE: Tower Level 3



1. Looking down stairs from Tower Level 3. June 2, 2016.



2. Tower Level 3, looking southwest, showing stairs down to Level 2. June 12, 2020.



3. Stairs from Tower Level 3 up to Level 4. June 12, 2020.

BEFORE: Tower Level 4



1. Tower Level 4 looking northeast with stairs up to Level 5. June 12, 2020.



2. Tower Level 4 flooring looking northeast. June 12, 2020.

BEFORE: Tower Level 5



1. Tower Level 5 with stairs to Bell Level 1. June 2, 2016.

E. Improved areas

COMPLETION: Tower Level 2 (“Yellow Room”)



1. Looking East. July 4, 2022.



2. Looking Northeast. September 24, 2022.



3. Looking northwest. Former toilet cubicle at rear. July 4, 2022.



4. Looking west. Door to upper Tower on left. July 4, 2022.

COMPLETION: Tower Level 3



1. Looking south. Stairs up to Level 3. September 24, 2022.



2. Looking east. Stairs up to Level 3. September 24, 2022.



3. Looking southwest. Stairs down to Level 2. September 24, 2022.



4. Looking north. Stairs up to Level 4. September 24, 2022.

COMPLETION: Tower Level 4



1. Looking southwest. May 28, 2022.



2. Looking west. Stairs down to Level 3. September 24, 2022.



3. Looking west. Stairs up to Level 4. September 24, 2022.



1. Looking south. Stairs to Bell Level 1. Clock enclosure on right. September 24, 2022.



2. Looking south. Stairs to Bell Level 1. September 24, 2022.



3. Looking south. Clock enclosure on left. September 24, 2022.